

ARIZ is the normal abbreviation of the state, unless listed (le: AZ)

The following is an illustrations of a Type referenced by the PIC Type Note, in the listings.



1.4243 AIR BASE BRANCH / TUCSON, ARIZ. Slight serif

The following are examples of different styles found from Arizona towns, with type numbers.



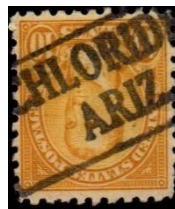
1.2274 1.427001



2.4214



2.4243



2.425



4.4253



4.4254



4.42(53/73)

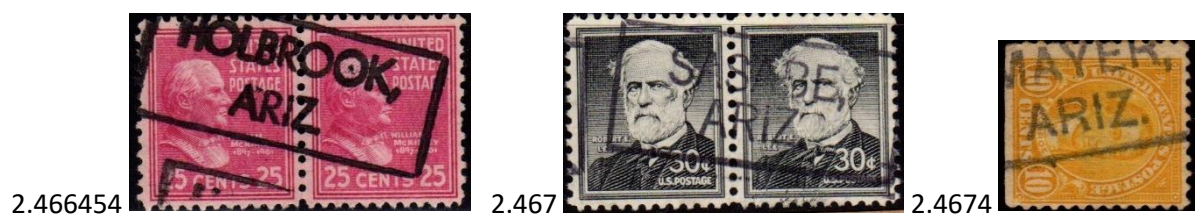
2.42941



2.4263



2.429



ARIZONA Jan 1 2019

Type	Note	Town	Note	Usage
1.4243	PIC	AIR BASE BRANCH / TUCSON, ARIZ.		1938
4.42632		AJO		1926
2.429		AJO,		1923
2.4644		ASHFORK	CQ	1908
2.46		BENSON,		1954
2.64(5/9)		BENSON		1957
2.666		BOWIE		1938
2.466		BOWIE,		1926, 32, 38
2.56		BULLHEAD CITY		1938
2.46		CACTUS,		1938, 54
2.4214		CASA GRANDE,		1926
7.4643	DLR	CHANDLER		1917
2.425		CHLORIDE		1923, 26
2.6664		CHLORIDE		1938
2.46		CLARKDALE,		1922, 26, 31, 38
2.4254		CLEMENCEAU,		1945
2.46		COOLIDGE,		1940
2.4214		COTTONWOOD,		1926
2.460005		COTTONWOOD, / AZ		1974
2.465		DOUGLAS		1912, 14, 17
4.4253		DOUGLAS		1917D, 22, 26, 32, 35
4.4644		DOUGLAS		1932
2.425		DOUGLAS,		1918
7.4643	DLR	DUNCAN		1918, 22, 26, 32
2.44(5/6)		ELOY		1954
2.4664		ELOY		1938, 59
1.1562		ELOY,		1938
2.460005		FLAGSTAFF / AZ	CQ	1968
1.1262		FLORENCE		1917
1.427001		FLORENCE		1938
2.4243		FLORENCE		1926
2.64(54/64)		FLORENCE		1956
7.4643	DLR	FLORENCE		1917
2.46		FLORENCE,		1938
2.461		FORT DEFIANCE		1922
2.64(5/6)		FORT DEFIANCE		1938
2.4643		FORT HUACHUCA,		1926, 40
2.4243		FORT HUACHUCA,		1926
2.5214		FORT HUACHUCA	CQ	1922
2.625		GANADO		1954
2.46		GANADO,		1954

1.1543		GILA BEND,	1938
2.46	CON	GILA BEND,	1963
2.467005		GILA BEND, / AZ	1961
2.46		GILBERT,	1938
2.46		GLENDALE	1922, 23, 26
2.64(5/6)		GLENDALE	1938
2.46		GLENDALE,	1938, 54
2.460005		GLENDALE, / AZ	1968
7.4643	DLR	GLENDALE	1931
2.4664		GLOBE,	1908, 11
2.46742		GLOBE,	1908
1.2274		GOLDROAD,	1914
7.4643	DLR	GRAND CANYON	1917, 22, 26, 32, 34
2.460005		HAYDEN	1968
2.46		HAYDEN	1954
2.46		HOLBROOK	1926, 38
2.466454		HOLBROOK	1938
2.467		HOLBROOK	1961
2.666		HOLBROOK	1938
4.4254		HOLBROOK	1922
2.66		HUMBOLDT	1917
2.425		JEROME	1917, 22
2.46		JEROME,	1922, 26
1.1644		KAYENTA,	1979
2.466		KINGMAN	1908
2.46		KINGMAN,	1917, 38
2.48(1/5)		LITCHFIELD PARK	1954
2.46	CON	LUPTON,	1938
2.4674		MAYER,	1922
2.4664		MESA	1938
2.157		MESA,	1954
2.46002		MIAMI	1914
4.4254		MORENCI	1922, 26, 31
4.4543		MORENCI	1914, 17, 18, 21, 22
2.4263		MORENCI,	1926, 34, 38
1.425		NOGALES,	1918, 20, 24
2.4664		OATMAN	1917
4.4254		OATMAN	1922, 26
2.4663		OATMAN,	1938
2.46		ORACLE,	1954
2.4664		ORACLE,	1913
2.460005		ORAIBI, / AZ	1954, 59D, 68
1.1192		PARKER,	1908

2.4674		PARKER	CQ	1917, 22
2.64(5/9)		PARKER		1938
2.460005		PARKER, / AZ		1954, 68
2.467005		PEARCE / AZ		1968
2.46		PEORIA,		1917
2.4664		PEORIA,		1938, 40
4.4273		PHOENIX		1922, 25SD, 26, 28SD, 29
4.4644		PHOENIX		1922, 25SD, 26, 28SD, 30D, 32, 38
2.46		PHOENIX / AZ		1954, 63, 68, 71
2.460005		PHOENIX, / AZ		1971
2.46	CON	PIMA,		1963
4.46434		PRESCOTT		1917
4.4614		PRESCOTT	ePH	1922, 26
4.4253		PRESCOTT,		1917, 22
2.4644		PRESCOTT,		1908, 17, 19
1.1644		RANDOLPH,		1938
2.42832		RAY,		1922, 32, 38
2.467005		RIMROCK, / AZ		1968
2.4254		SAFFORD		1922
4.42(53/73)		SAFFORD		1917
2.46		SAFFORD,		1922, 23, 26, 37, 40
2.46	CON	SAHUARITA,		1954
2.46		SAINT JOHNS,		1961
2.56		SAINT MICHAELS		1938
1.1643		SAN SIMON,		1938
2.467		SASABE,		1954
2.465		SCOTTSDALE		1938
2.46		SCOTTSDALE / AZ		1968
2.46		SCOTTSDALE,		1954, 68
2.46	CON	SEDONA,		1954, 61, 65
2.46006		SEDONA,		1954
2.460005		SEDONA, / AR	eAR	1968
2.460005		SEDONA, / AZ		1968
2.46		SELIGMAN		1926, 36, 38
1.129		SELIGMAN,		1917
2.466454		SHOW LOW		1938
2.64(54/64)		SHOW LOW		1938
2.4263		SOMERTON		1926
2.46		SOMERTON		1938
2.64(54/64)		SOMERTON		1954
2.46		SONORA		1926
2.4293		SONORA,		1938, 40
2.4653		SPRINGERVILLE,		1922, 26, 32, 34

2.4243		SPRINGERVILLE,		1926, 38, 43, 49
2.460005		SPRINGERVILLE, / AR	eAR	1954, 66
2.56		SPRINGERVILLE,		1938, 54, 61
1.1644		SUPAY,		1968
2.4263		SUPERIOR,		1926, 31, 35
2.465		TEMP E,	e	1923
2.4644		TEMPE,		1954
2.4674		TEMPE,		1922, 23, 25SD, 28SD, 32, 34
2.46741		TEMPE	CQ	1917
2.460005		TEMPE, / AZ		1971
2.46		THATCHER		1954
4.4254		THATCHER		1922, 26
2.46		THATCHER,		1954
1.1643		TOLLESON, (ARIZ.)		1940
2.456354		TOMBSTONE		1954, 61, 67
2.4593		TOMBSTONE		1914
1.26		TOMBSTONE,		1926
2.46		TOMBSTONE,		1913, 14
2.461		TOMBSTONE,		1913
2.56		TOMBSTONE,		1913
1.2243		TUCSON,		1922
2.46		WARREN		1922, 23, 26, 32
2.469		WARREN		1931D, 38, 43
2.669		WARREN		1938
7.4643		WARREN		1917, 19
2.4653		WARREN,		1938
2.46		WARREN,		1931D, 54
1.4661	PRO	WHIPPLE / BRANCH (PRESCOTT)		1926, 32
1.1263		WHIPPLE BR. (PRESCOTT ARIZ.)		1926
1.161		WICKENBURG,		1923
2.46		WICKENBURG,		1954
2.46		WILLCOX,		1926, 32
1.4542	PRO	WILLIAMS		1926, 31
2.425		WILLIAMS		1917
2.4663		WILLIAMS,		1926, 38, 40
2.460005		YOUNGTOWN, / AZ		1968
1.1543		YUMA,		1954
1.156354		YUMA,		1938
1.16441		YUMA,		1954
2.42941		YUMA,		1917
2.164305		YUMA, AZ.		1968

